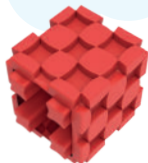
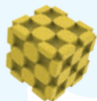




SakaraTM

THOUGHTS BECOME THINGS



ONE **SUPER-TOY!** INFINITE ADVANTAGES

Sakara is a unique and the most versatile building block with **M-DIM technology (Multi-directional interlocking mechanism)** that gives it the unique ability to plug in sideways & diagonally, allowing your child to imagine in 3D.

You can plug these cubes together in **105 DIFFERENT WAYS.** That is 11 times more than other regular building blocks.

Since there is more than one right way to fix two cubes with each other, every child responds to Sakara in their own unique, complex and creative ways and the possibilities are endless. Sakara not just encourages imagination and innovation, but it also makes way to countless possibilities.



Enhances Cognitive
Development



Accelerate Sensory &
Motor Skills



Acts as a
Digital Detox



Constructive & Creative
Way to Engage your Child



Improves Concentration
and Focus



Made From
Non Toxic Materials

GIVE YOUR CHILD THE FREEDOM TO CREATE



Different
Structures



Different
Objects



Different
Vehicles



Different
Animals

ABC

Different
Alphabets



Different
Shapes

CHOOSE FROM OUR
WIDE RANGE OF PACKS
AND EXPLORE MORE



★ BECOME A SAKARIAN ★

@

SAKARA FAN CLUB



Welcome to Sakara Fan Club - a unique, social and creative space for you to nurture and develop your 'social and interactive creativity'.



Upload and show-off the unique structures created by you



Share it with our Sakara Fan Club Community



Inspire others in the community with your special creations



Win contests and along with it some interesting goodies



Scan This Qr Code To Enter Into Sakara Fan Club

Index

37 PIECES MODEL

Airplane	1
Helicopter	3
Robot	5
Table & Chair	7
Sofa	9
Lion	11
Giraffe	13
Fish	15

52 PIECES MODEL

Bicycle	17
Motorcycle	19
F1 car	21

Index

52 PIECES MODEL

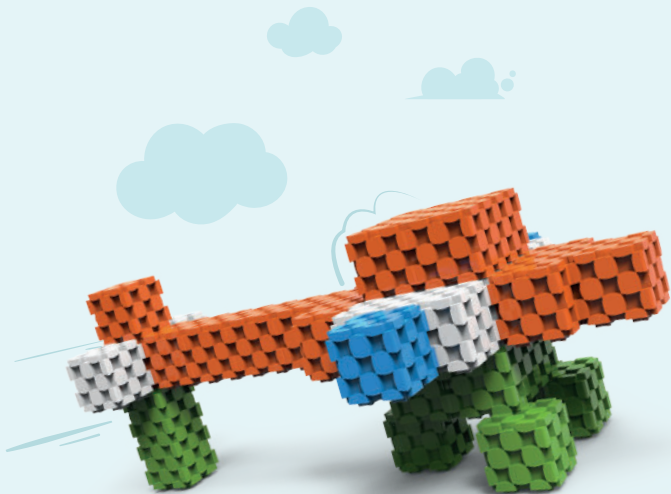
Go-kart	23
Cow	25
Dog	27
Horse	29

81 PIECES MODEL

Monkey	31
Elephant	33
Kangaroo	35

DIY CUBES MODEL

37 to 66



IMAGES ARE SUBJECT TO COPYRIGHT OF
GROW INSTAFRESH LLP. ALL RIGHTS RESERVED.

Airplane

The Wright Brothers invented and building
the world's first successful airplane.

The 747 has a wingspan of 211 feet
(64 meters) and can carry
over 600 passengers.

No. of cubes and colours required to create this structure





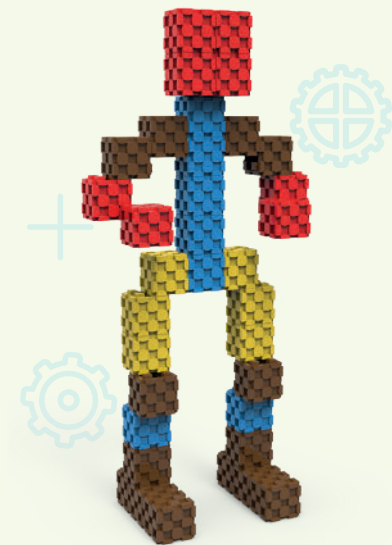
IMAGES ARE SUBJECT TO COPYRIGHT OF
GROW INSTTAFRESH LLP. ALL RIGHTS RESERVED.

Helicopter

The first practical helicopter was invented by Igor Sikorsky in 1939. Helicopters can fly backwards and sideways, as well as hover in one spot, which makes them ideal for search and rescue missions, construction, and filming.

No. of cubes and colours required to create this structure





IMAGES ARE SUBJECT TO COPYRIGHT OF
GROW INSTTAFRESH LLP. ALL RIGHTS RESERVED.

Robot

The word 'robot' comes from the Czech word 'roboŕa' which means 'forced labor'. Humanoid robots are used in a variety of applications, including entertainment, education, healthcare, and space exploration.

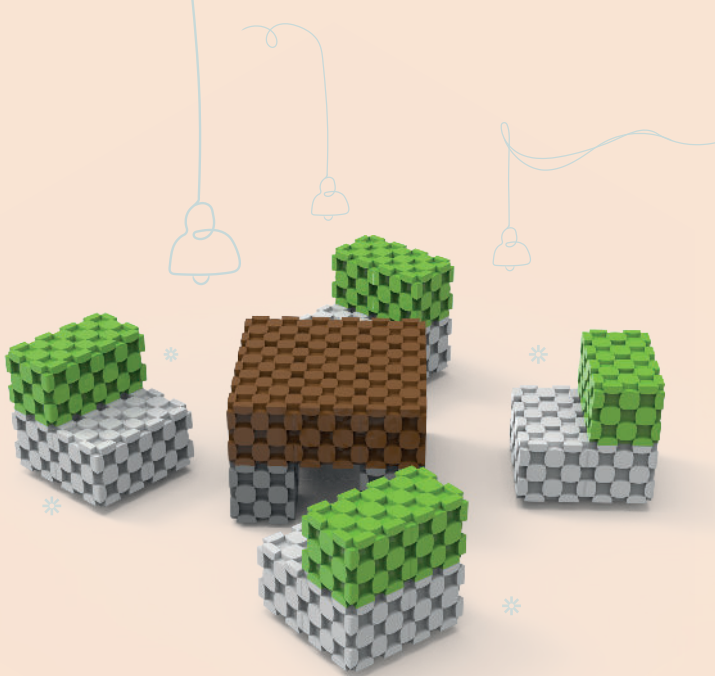
No. of cubes and colours required to create this structure

8

7

10

6



IMAGES ARE SUBJECT TO COPYRIGHT OF
GROW INSTTAFRESH LLP. ALL RIGHTS RESERVED.

Table & Chair

The first known chair was used by the ancient Egyptians and was made of ebony and ivory. The world's largest table was created in 2019 in India and was over 53,000 feet (16,154 meters) long.

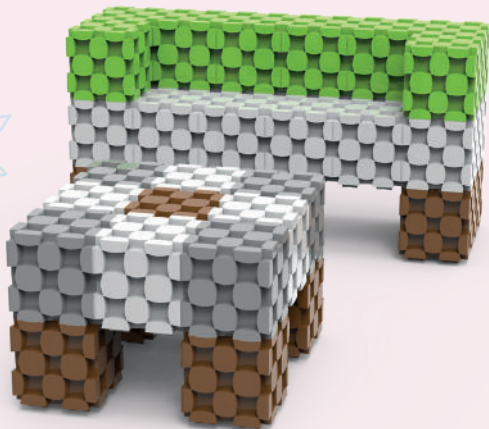
No. of cubes and colours required to create this structure

16

8

9

4



IMAGES ARE SUBJECT TO COPYRIGHT OF
GROW INSTAFRESH LLP. ALL RIGHTS RESERVED.

Sofa

The word 'sofa' comes from the Arabic word 'suffah' which means a raised platform or bench. The most expensive sofa ever sold was by designer Ron Arad, which was sold at auction in 2016 for \$409,000.

No. of cubes and colours required to create this structure

16

8

9

4



IMAGES ARE SUBJECT TO COPYRIGHT OF
GROW INSTAFRESH LLP. ALL RIGHTS RESERVED.

Lion

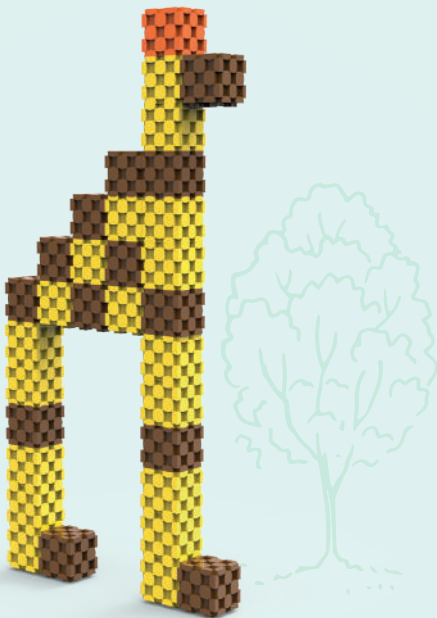
Lions are the second-largest big cats,
after tigers. Adult male lions can weigh up
to 550 pounds (250 kg)
The roar of a lion can be heard from up
to five miles (eight kilometers) away.

No. of cubes and colours required to create this structure

17

6

4



IMAGES ARE SUBJECT TO COPYRIGHT OF
GROW INSTTAFRESH LLP. ALL RIGHTS RESERVED.

Giraffe

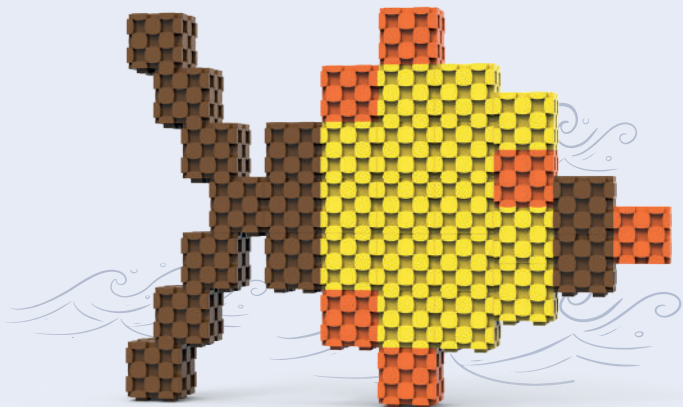
Giraffes are the tallest land animals on Earth and can grow up to 18 feet (5.5 meters) tall. Giraffes only need 5-30 minutes of sleep per day, often in short naps of 1-2 minutes.

No. of cubes and colours required to create this structure

18

1

13



IMAGES ARE SUBJECT TO COPYRIGHT OF
GROW INSTTAFRESH LLP. ALL RIGHTS RESERVED.

Fish

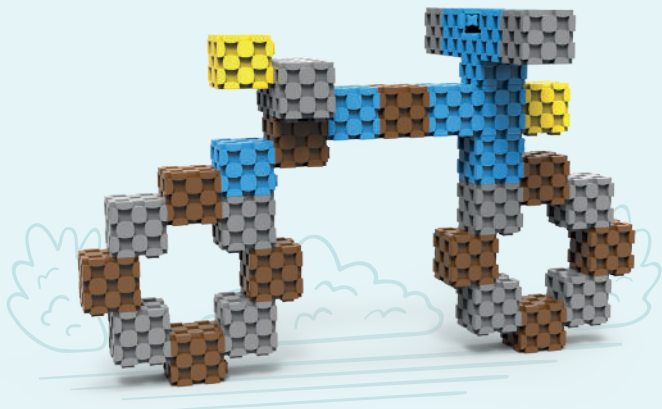
"Fish are the most diverse group of vertebrates on Earth, with over **33,000** known species. Many fish are able to change color and pattern to camouflage themselves from predators or attract mates.

No. of cubes and colours required to create this structure

16

6

12



IMAGES ARE SUBJECT TO COPYRIGHT OF
GROW INSTTAFRESH LLP. ALL RIGHTS RESERVED.

Bicycle

The first bicycle was invented in 1817 by Baron Karl von Drais in Germany. It was called a 'running machine' and had no pedals. The word 'bicycle' comes from the Greek words 'bi' (meaning two) and 'kyklos' (meaning circle or wheel).

No. of cubes and colours required to create this structure

2

8

10

12



IMAGES ARE SUBJECT TO COPYRIGHT OF
GROW INSTTAFRESH LLP. ALL RIGHTS RESERVED.

Motorcycle

The first motorcycle was invented in 1885 by Gottlieb Daimler and Wilhelm Maybach

The fastest motorcycle in the world is the Kawasaki Ninja H2R, which can reach speeds of over 200 mph (322 km/h)

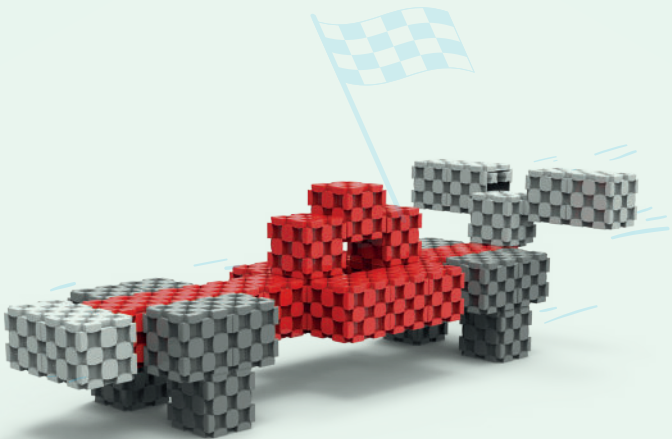
No. of cubes and colours required to create this structure

2

12

18

13



IMAGES ARE SUBJECT TO COPYRIGHT OF
GROW INSTTAFRESH LLP. ALL RIGHTS RESERVED.

F1 car

F1 cars can reach speeds of over 220 mph (354 km/h) and can go from 0 to 60 mph (97 km/h) in less than two seconds.

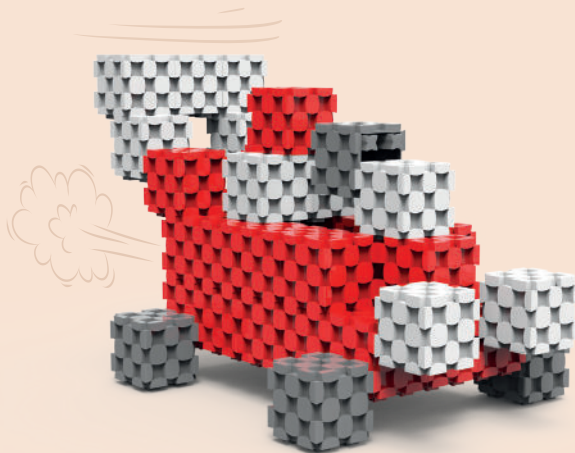
The engines in F1 cars can rev up to 18,000 RPM, which is more than three times the maximum RPM of a typical passenger car.

No. of cubes and colours required to create this structure

7

16

12



IMAGES ARE SUBJECT TO COPYRIGHT OF
GROW INSTTAFRESH LLP. ALL RIGHTS RESERVED.

Go-kart

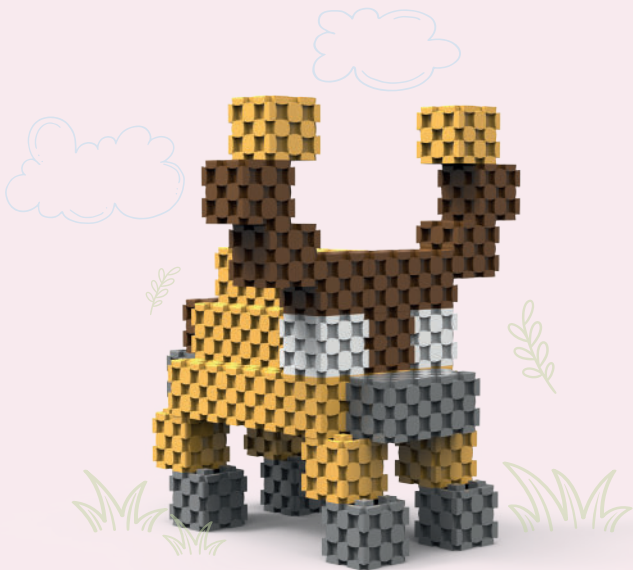
The first go-kart was built in Southern California in 1956 by a man named Art Ingels. There are many different types of go-karts, including single-seater and two-seater models, as well as off-road and indoor electric go-karts.

No. of cubes and colours required to create this structure

10

28

5



IMAGES ARE SUBJECT TO COPYRIGHT OF
GROW INSTAFRESH LLP. ALL RIGHTS RESERVED.

Cow

Cows have four stomachs, which help them break down tough and fibrous plants like grasses. Cows can see almost 360 degrees around them, but they have a blind spot directly behind them.

No. of cubes and colours required to create this structure

27

4

14

6



IMAGES ARE SUBJECT TO COPYRIGHT OF
GROW INSTTAFRESH LLP. ALL RIGHTS RESERVED.

Dog

Dogs have been domesticated for over **15,000** years and are one of the oldest domesticated animals in the world. Dogs are capable of understanding up to **250** words and gestures, and some breeds like Border Collies and Poodles can understand even more.

No. of cubes and colours required to create this structure

24

2

14

6



IMAGES ARE SUBJECT TO COPYRIGHT OF
GROW INSTAFRESH LLP. ALL RIGHTS RESERVED.

Horse

Horses can run within hours of being born, and they can reach speeds of up to **55 mph**. Horses are herbivores and can eat up to **2%** of their body weight in food every day.

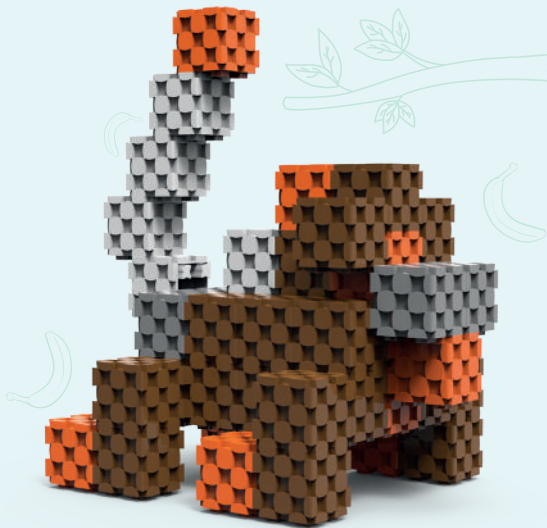
No. of cubes and colours required to create this structure

25

1

11

1



IMAGES ARE SUBJECT TO COPYRIGHT OF
GROW INSTTAFRESH LLP. ALL RIGHTS RESERVED.

Monkey

Monkeys are very social animals and often live in large groups called troops. Monkeys are a type of primate, and they are closely related to humans, sharing **98% of our DNA**

No. of cubes and colours required to create this structure

5

15

26

5



IMAGES ARE SUBJECT TO COPYRIGHT OF
GROW INSTTAFRESH LLP. ALL RIGHTS RESERVED.

Elephant

Elephants are the largest land animals on Earth. The African elephant can weigh up to **7,000 kg (15,000 lb)** and stand up to **3 meters (10 feet)** tall. Elephants have a long gestation period of **22 months**, which is the longest of any land animal. They typically give birth to a single calf, which weighs around **120 kg (265 lb)** at birth.

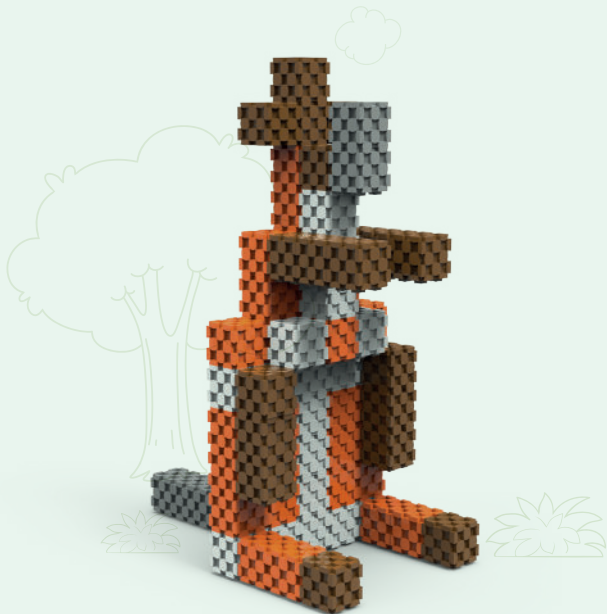
No. of cubes and colours required to create this structure

15

25

24

7



IMAGES ARE SUBJECT TO COPYRIGHT OF
GROW INSTAFRESH LLP. ALL RIGHTS RESERVED.

Kangaroo

Male kangaroos are called boomers, while female kangaroos are called flyers.

Kangaroos can hop at speeds of up to 30 miles per hour and can jump up to three times their own body length in one leap.

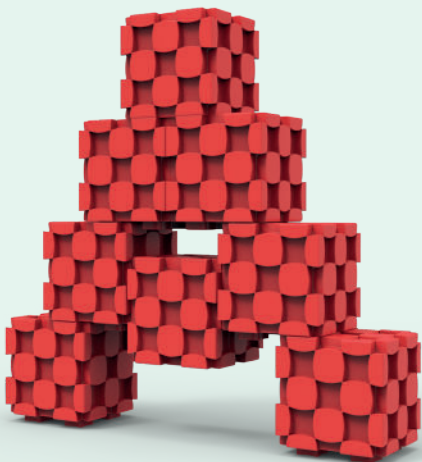
No. of cubes and colours required to create this structure

18

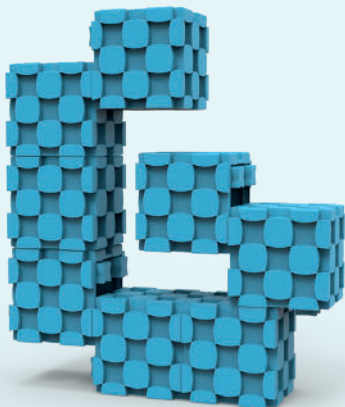
30

24

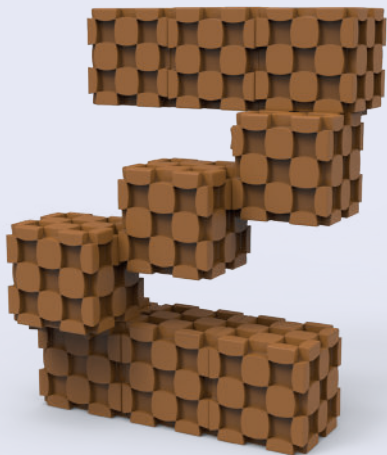
5



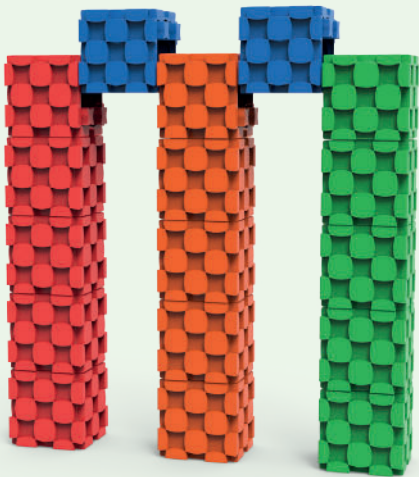
IMAGES ARE SUBJECT TO COPYRIGHT OF
GROW INSTTAFRESH LLP. ALL RIGHTS RESERVED.



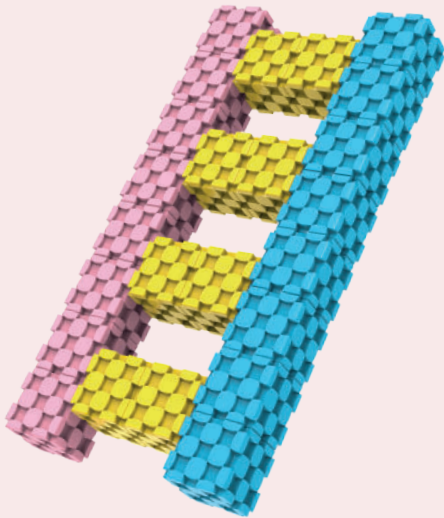
IMAGES ARE SUBJECT TO COPYRIGHT OF
GROW INSTTAFRESH LLP. ALL RIGHTS RESERVED.



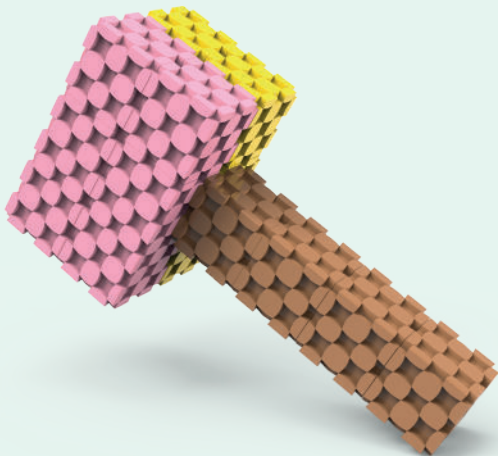
IMAGES ARE SUBJECT TO COPYRIGHT OF
GROW INSTTAFRESH LLP. ALL RIGHTS RESERVED.



IMAGES ARE SUBJECT TO COPYRIGHT OF
GROW INSTTAFRESH LLP. ALL RIGHTS RESERVED.



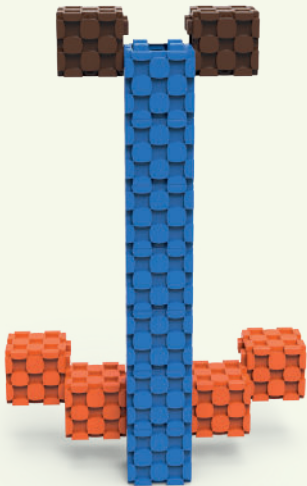
IMAGES ARE SUBJECT TO COPYRIGHT OF
GROW INSTTAFRESH LLP. ALL RIGHTS RESERVED.



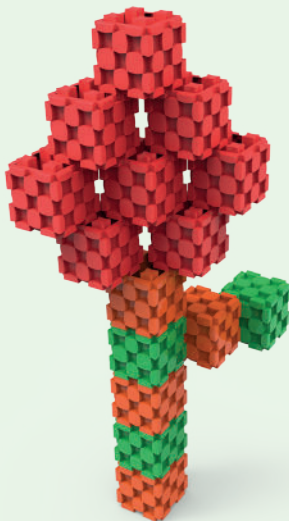
IMAGES ARE SUBJECT TO COPYRIGHT OF
GROW INSTAFRESH LLP. ALL RIGHTS RESERVED.



IMAGES ARE SUBJECT TO COPYRIGHT OF
GROW INSTTAFRESH LLP. ALL RIGHTS RESERVED.



IMAGES ARE SUBJECT TO COPYRIGHT OF
GROW INSTTAFRESH LLP. ALL RIGHTS RESERVED.



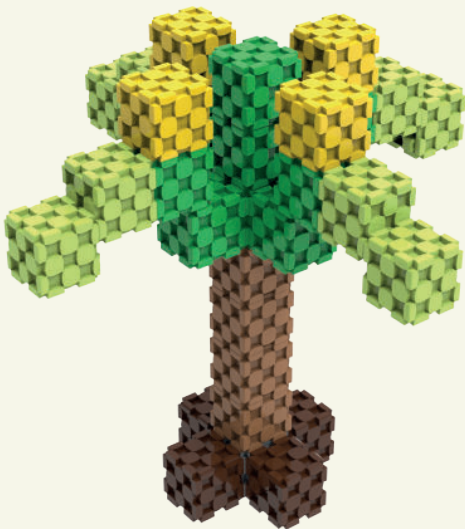
IMAGES ARE SUBJECT TO COPYRIGHT OF
GROW INSTTAFRESH LLP. ALL RIGHTS RESERVED.



IMAGES ARE SUBJECT TO COPYRIGHT OF
GROW INSTAFRESH LLP. ALL RIGHTS RESERVED.



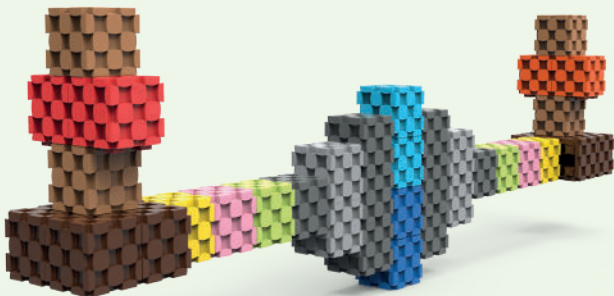
IMAGES ARE SUBJECT TO COPYRIGHT OF
GROW INSTAFRESH LLP. ALL RIGHTS RESERVED.



IMAGES ARE SUBJECT TO COPYRIGHT OF
GROW INSTTAFRESH LLP. ALL RIGHTS RESERVED.



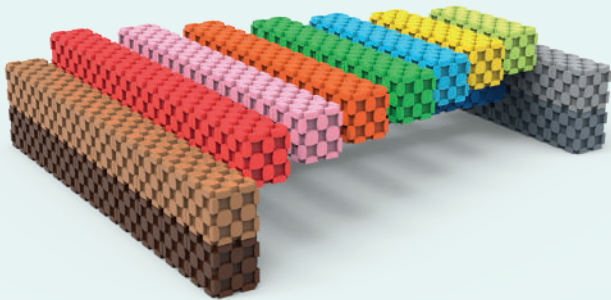
IMAGES ARE SUBJECT TO COPYRIGHT OF
GROW INSTTAFRESH LLP. ALL RIGHTS RESERVED.



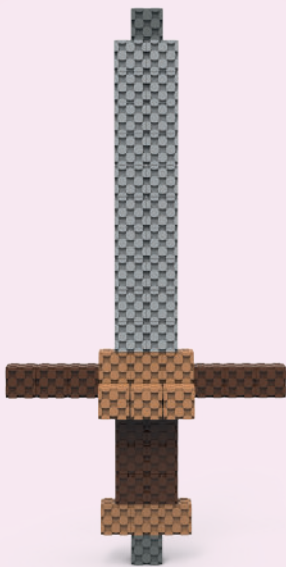
IMAGES ARE SUBJECT TO COPYRIGHT OF
GROW INSTAFRESH LLP. ALL RIGHTS RESERVED.



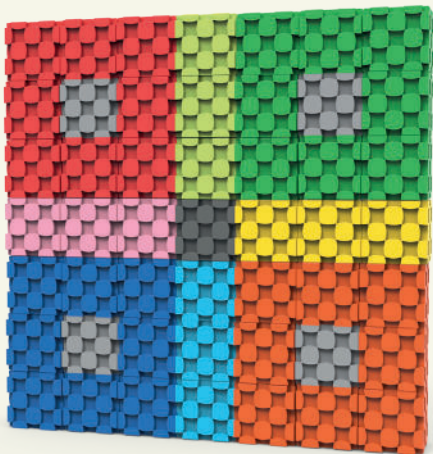
IMAGES ARE SUBJECT TO COPYRIGHT OF
GROW INSTAFRESH LLP. ALL RIGHTS RESERVED.



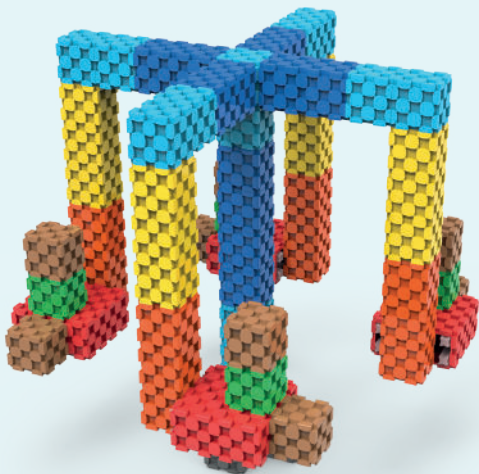
IMAGES ARE SUBJECT TO COPYRIGHT OF
GROW INSTTAFRESH LLP. ALL RIGHTS RESERVED.



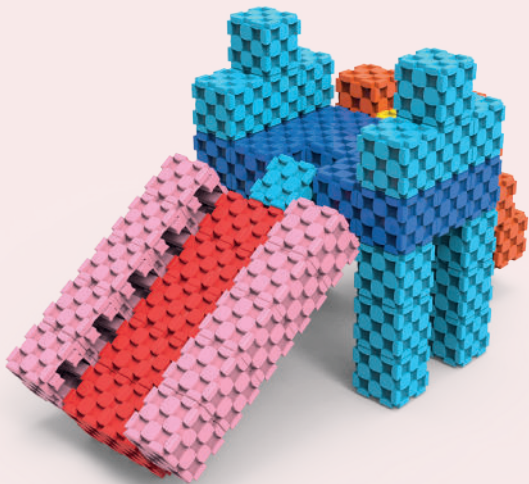
IMAGES ARE SUBJECT TO COPYRIGHT OF
GROW INSTAFRESH LLP. ALL RIGHTS RESERVED.



IMAGES ARE SUBJECT TO COPYRIGHT OF
GROW INSTTAFRESH LLP. ALL RIGHTS RESERVED.



IMAGES ARE SUBJECT TO COPYRIGHT OF
GROW INSTAFRESH LLP. ALL RIGHTS RESERVED.



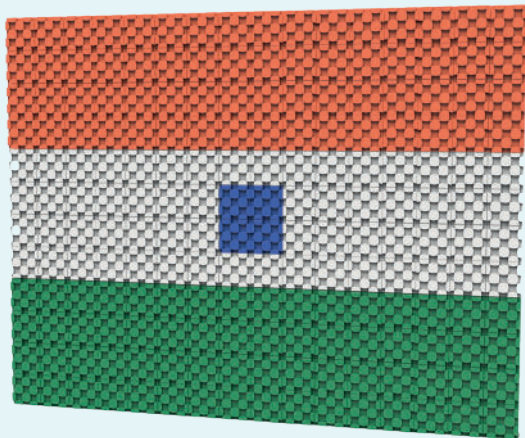
IMAGES ARE SUBJECT TO COPYRIGHT OF
GROW INSTAFRESH LLP. ALL RIGHTS RESERVED.



IMAGES ARE SUBJECT TO COPYRIGHT OF
GROW INSTTAFRESH LLP. ALL RIGHTS RESERVED.



IMAGES ARE SUBJECT TO COPYRIGHT OF
GROW INSTTAFRESH LLP. ALL RIGHTS RESERVED.



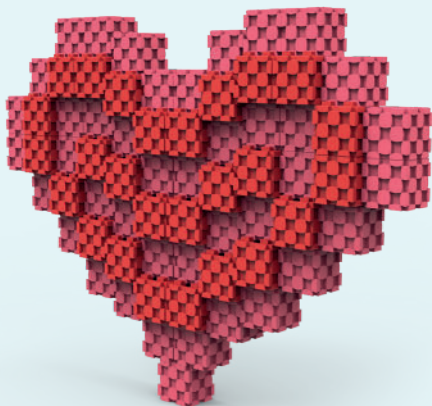
IMAGES ARE SUBJECT TO COPYRIGHT OF
GROW INSTAFRESH LLP. ALL RIGHTS RESERVED.



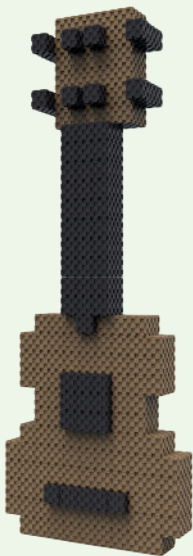
IMAGES ARE SUBJECT TO COPYRIGHT OF
GROW INSTTAFRESH LLP. ALL RIGHTS RESERVED.



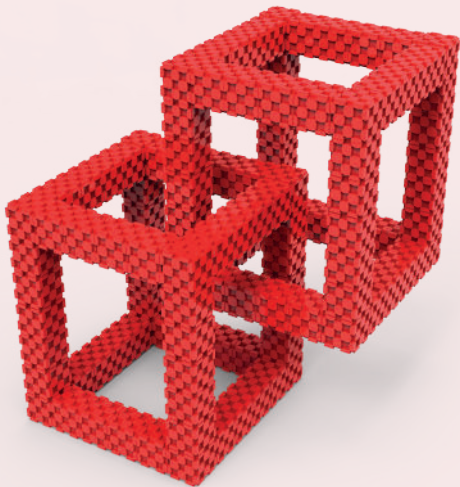
IMAGES ARE SUBJECT TO COPYRIGHT OF
GROW INSTAFRESH LLP. ALL RIGHTS RESERVED.



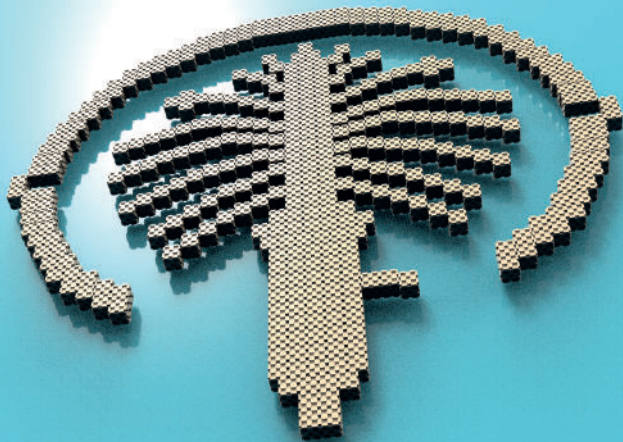
IMAGES ARE SUBJECT TO COPYRIGHT OF
GROW INSTAFRESH LLP. ALL RIGHTS RESERVED.



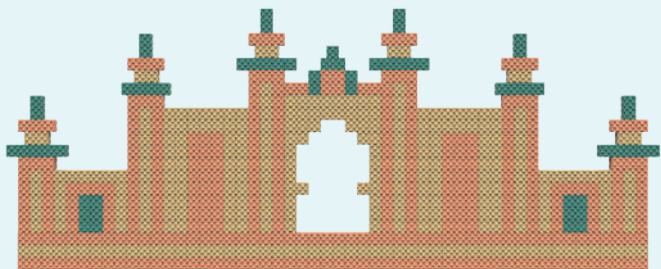
IMAGES ARE SUBJECT TO COPYRIGHT OF
GROW INSTAFRESH LLP. ALL RIGHTS RESERVED.



IMAGES ARE SUBJECT TO COPYRIGHT OF
GROW INSTAFRESH LLP. ALL RIGHTS RESERVED.



IMAGES ARE SUBJECT TO COPYRIGHT OF
GROW INSTAFRESH LLP. ALL RIGHTS RESERVED.



IMAGES ARE SUBJECT TO COPYRIGHT OF
GROW INSTAFRESH LLP. ALL RIGHTS RESERVED.

Terms and conditions


1. Ownership Rights: The website and all of its content, including the patented building block, are owned by Grow InsttaFresh LLP. Users are not permitted to copy, reproduce, distribute, or create derivative works based on any content on the website without obtaining prior written permission from Grow InsttaFresh LLP.

2. Intellectual property rights: The patented 3D building block for sale on the website is owned by the company or individual holding the patent, and all intellectual property rights, including copyright, trademarks, and patents, are reserved. No part of the product or the associated intellectual property may be reproduced, copied, modified, or distributed without express permission from the company.

3. Prohibition of Copying: Customers who purchase the 3D building block are prohibited from copying, reproducing, distributing, or otherwise using the product without express written permission from the owner of the intellectual property.

4. Monitoring: The company or individual holding the patent may monitor online marketplaces and third-party websites for unauthorized use of the 3D building block and take appropriate legal action against any infringing parties.

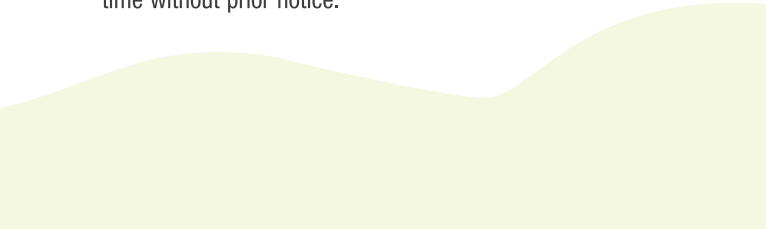
5. Acceptable Use: Users must not use the website for any illegal or unauthorized purpose. Users must not upload or transmit any content that is illegal, defamatory, obscene,




or infringes on any third-party rights. Users must also not attempt to gain unauthorized access to the website or its servers.

6. Product Information: The website provides information about the patented building block, including its features, benefits, and uses. While we strive to provide accurate information, we cannot guarantee the completeness or accuracy of all information provided.

7. Product Availability: The patented building block is subject to availability. While we make every effort to ensure that the product is available for purchase, we reserve the right to limit or discontinue the sale of the product at any time without prior notice.






8. Order Placement and Payment: Users may place orders for the patented building block through the website. Users must provide accurate and complete information when placing an order. Payment for the product is due at the time of purchase. We accept various forms of payment, including credit cards and online payment services.

9. Shipping Delivery: We will ship the patented building block to the shipping address provided by the user at the time of purchase. Shipping times and costs may vary depending on the location of the user and other factors. We cannot guarantee delivery times and are not responsible for any delays caused by shipping carriers.




10. Purchase and delivery: Customers may purchase the patented 3-dimensional building block through the website and are responsible for providing accurate delivery information. The company will make best efforts to deliver the product within the stated delivery timeframe, but is not responsible for any delays or issues that arise during shipping.

11. Returns and Refunds: We offer limited return policy for the patented building blocks. Users may return the product within 7 days of purchase for a full refund minus shipping costs. Only in the case of the product inside the package has any manufacturing defects, the product must be in its original packaging and in unused conditions for which refund will be issued to the original form of payment only.



12. Disclaimer of Warranties: The patented building block is provided "as is" without any warranty of any kind, either express or implied. We make no warranties or representations about the accuracy, completeness, or reliability of any content on the website or the patented building block.

13. Liability and disclaimers: The company is not responsible for any injury, damage, or loss that may arise from the use or misuse of the patented 3-dimensional building block. Users of the product assume all risk and liability associated with its use. The company makes no warranties or representations regarding the quality or performance of the product, and is not responsible for any damages that may arise from its use.



14. Privacy policy: The company will collect and use personal information in accordance with applicable laws and regulations. The company may use customer information for the purpose of improving the website and marketing the patented 3-dimensional building block, but will not sell or distribute customer information to third parties without express consent.

15. Governing Law and Jurisdiction: These terms and conditions are governed by the laws of Tamil Nadu, India. Any disputes arising from the use of the website or the patented building block shall be resolved in the courts of Chennai, India.

16. Modifications to Terms and Conditions:

Grow Insttafresh LLP reserves the right to modify these terms and conditions at any time, without notice. It is your responsibility to regularly review these terms and conditions for any updates or changes.

By accessing and using this website, you agree to these terms and conditions. If you do not agree to these terms and conditions, you should not use this website (www.sakara.in) or purchase the patented building block.



SakaraTM
THOUGHTS BECOME THINGS



MANUFACTURED AND MARKETING BY:
GROW INSTTAFRESH LLP
5TH FLOOR, RAJA RAJESHWARI TOWERS,
NO-51, RK SALAI, CHENNAI - 600004.

☎ +91 72003 89039

✉ marketing@sakara.in

🌐 www.sakara.in



SCAN THIS QR CODE AND
LEARN HOW TO BUILD
CREATIVITY USING SAKARA